

INSTALLATION INSTRUCTIONS

ONKI AEGIS CENTER GUARD – PART # 869402A
07-08 Toyota FJ CRUISER

Parts List (Please check that you have all the parts listed below before you start installing)

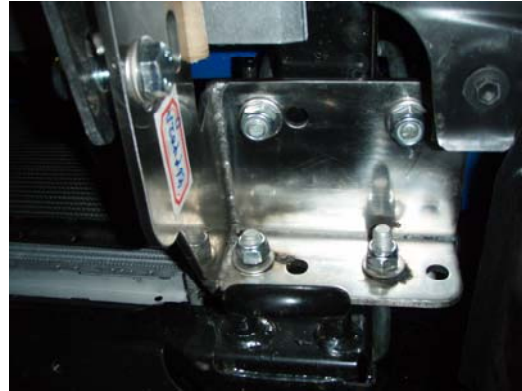
Quantity	Description
2	Mounting brackets
4	M12 U-bolts
6	M12X40 (19mm hex head bolts)
14	M12 Nylon lock nuts (19mm socket nuts)
14	1/2" Washers

Installation of Mounting Frame Brackets & Brush Guard

1. Identify left and right brackets to be used (D for driver side / P for passenger side).
2. On the driver side, install one U-bolt vertically right in front and above the tow hook. Install another U-bolt horizontally right behind and above the tow hook (Picture# 1).



Picture# 1



Picture# 2

3. Install the Driver Side bracket onto the U-Bolts using the supplied washers and nylon lock nuts. Do not fully tighten the nuts (Picture# 2).
4. Repeat procedure on the passenger side.
5. With the help of another person, install Aegis Guard to brackets with supplied nuts and bolts and washers. Make sure that the center uprights are on the inside of the brackets.
6. Adjust and securely tighten all bolts and nuts making sure that the Aegis Guard is centered on the vehicle.



**For technical support, please call
1-510-567-8875**