

INSTALLATION INSTRUCTIONS

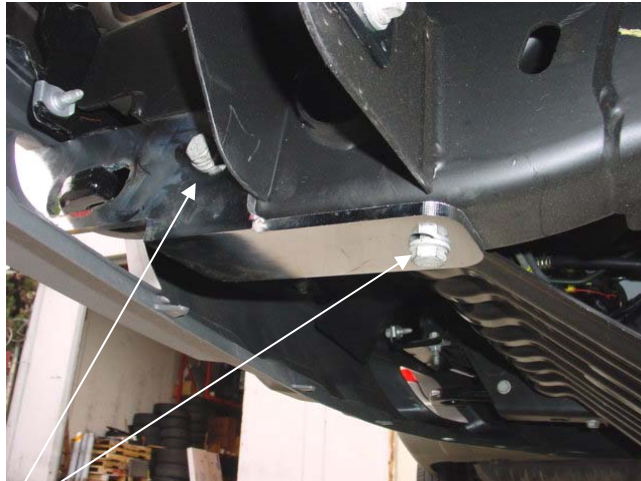
ONKI MODULAR AEGIS CENTER GUARD – PART # 462444A
03-06 GMC Sierra/Duramax 1500/2500/3500 HD
(including '07 Classic)

Parts List *(Please check that you have all the parts listed below before you start installing)*

Quantity	Brush guard installation hardware
2	Mounting brackets
4	M12X40 hex head bolts. (Tow hook replacement bolts)
6	M12X40 (19mm hex head bolts)
6	M12 Nylon lock nuts (19mm socket nuts)
20	½" SAE washers

Installation of Mounting Frame Brackets & Aegis Guard

1. Identify the left and right brackets to be used (D for driver side / P for passenger side).



2. Remove the factory bolt right behind the tow hook. (Discard)
3. Insert bracket through the opening hole and attached to the bottom of the main frame. Align and mount the bracket to the bottom of the main frame and loosely tight with supplied M12X40 bolts and ½" washers to the removed factory bolt locations.
4. Repeat step 2 thru 4 for the opposite side.
5. With the help of another person, align and position the Aegis Guard onto the installed brackets and securely tighten with the supplied M12X40 hex bolts, washers, and nuts.
6. Finally, make sure all nuts, bolts and brackets are tightened.

**For technical support, please call
1-510-567-8875**