

# INSTALLATION INSTRUCTIONS

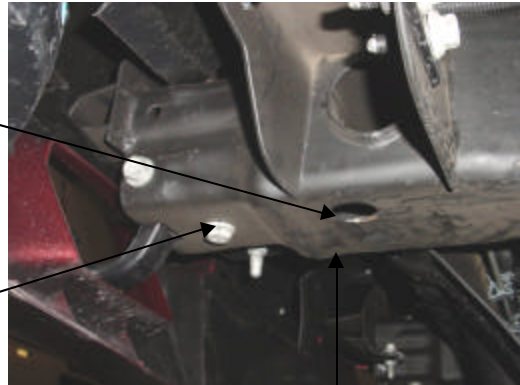
**ONKI MODULAR BRUSH GUARD – PART # 243228**  
03-06 CHEVY Silverado/Avalanche 1500/2500  
w/o Body Cladding

**Parts List** *(Please check that you have all the parts listed below before you start installing)*

Quantity	Brush guard installation hardware
2	Mounting brackets
2	1 ½" x 2 ½" nut plates
10	M12x40 (19mm hex head bolts)
8	M12 Nylon lock nuts (19mm socket nuts)
20	½" SAE washers

## Installation of Mounting Frame Brackets & Brush Guard

1. Identify the left and right brackets to be used (D for driver side / P for passenger side).
2. Insert the 1 ½" x 2 ½" nut plate with the wire attached, enter from the front of the main frame to the existing 1 ¼" hole on the bottom of the main frame.



3. Remove the bottom factory bolt right behind the tow hook.
4. Insert bracket through the opening hole and attach to the bottom of the main frame. Align and mount the bracket to the bottom of the main frame and loosely tight with supplied M12x40 bolt to the nut plate, reinstall the removed factory tow hook bolt.
5. Repeat step 2 thru 4 for the opposite side.
6. With the help of another person, align and position the Brush Guard onto the installed brackets and securely tighten with the supplied M12x40 Hex Bolts, washers, and nuts.
7. Finally, make sure all nuts, bolts and brackets are tightened.

**For technical support, please call  
1-510-567-8875**

