



AR-S AMERICAN RUNNER STAINLESS RUNNING BOARD
Part #: 128070S VEHICLE BRACKET CONFIGURATION (03/2009)

USE BRACKET#1,2,5 FOR:

Acura

01-06 MDX (w/o mud guard)

Chevy/GMC

90-05 Astro/Safari (w/ rocker panel) **May require bracket#4 for extension.*

DRIVER SIDE SHOWN BELOW.



DOMELIGHT WIRE IS (-) BLUE, LOCATED ON THE DRIVER SIDE REAR PILLAR.
PASSENGER SIDE SHOWN BELOW HERE



Dodge

97-03 Dakota Club Cab (w/ flares)

Honda/Isuzu

96-06 CR-V **Loosen under side cladding by removing plastic rivets to get access to mount bracket #5.
Trim cladding to clear bracket when reinstalled.
Cut approx. 4" on the bracket #2 on the shorter length to clear the bottom floor.*

01-05 Axiom (w/o mud guard) **Bracket# 1,2,4 are to be used for this vehicle.*



Picture of front bracket config.



Picture of mid & rear bracket config.



Driver side assembly shown above.

Hyundai

05-08 Tucson

Isuzu

06-08 i280/i290 Extended Cab

Jeep

06-08 Commander

07-08 Compass

92-08 Grand Cherokee **Mount bracket#5 on outside pinch weld (see picture below).*

Kia

03-08 Sportage **Mount bracket#5 on outside pinch weld (see picture below).*

Lexus

03-09 RX330/350/400H

Mazda

07-08 CX7 (must remove underseal cover)

Mercedes Benz

02-08 G Class

Mitsubishi

98-03 Montero Sport (w/o flares) **Mount bracket#5 on outside pinch weld (see picture below).*

92-00 Montero 4Dr **Mount bracket#5 on outside pinch weld (see picture below).*

Nissan

04-08 Titan King Cab

98-06 X-Terra (w/o mud flaps) *Mount bracket#5 on outside pinch weld (see picture below).

Saturn

02-06 Vue

Suzuki

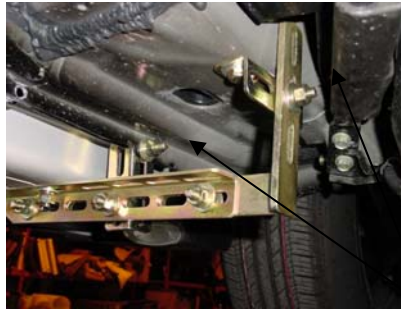
06-08 Grand Vitara

Toyota

01-06 Highlander (w/o mud guards) *See pictures below. 2 brackets per side are used on this vehicle.



Driver side front using #1,2,5 mounting brackets.

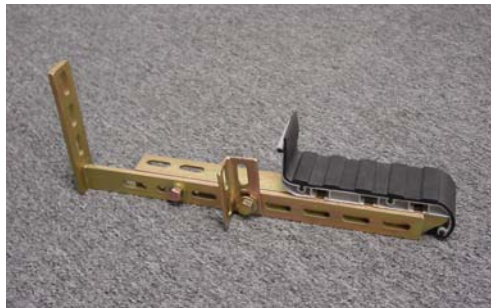


Passenger side rear using #1,2 and 2 #5 brackets, Note: shorten bracket #2 by 1" to clear.



Optional: Driver side rear using #1,2,5. bent bracket and mounted to the floor.

00-06 Tundra Access Cab (w/ flares)



Configuration to mount on outside pinch weld.