

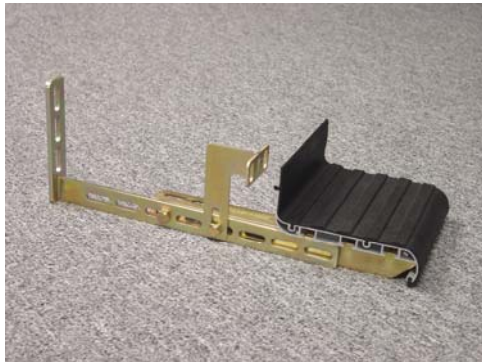


## AR-S AMERICAN RUNNER STAINLESS RUNNING BOARD Part #: 128055S VEHICLE BRACKET CONFIGURATION (03/2009)

### USE BRACKET# 1,2,3 FOR:

#### **Chevy/GMC**

88-09 Silverado/Sierra Regular Cab  
83-02 S-10 & S-15 Regular Cab  
83-02 Sonoma Standard Cab



Shown above is for Silverado/Sierra Standard Cab.

#### **Ford**

87-96 Bronco

#### **Mazda**

2007+ CX7 (must remove undercover)

---

### USE BRACKET# 1,2,4 FOR:

#### **Ford**

97-09 F-150 Regular Cab

99-08 F-250/F-350 Super Duty Standard Cab

Pictures shown below here is F250 regular cab (use Bracket #1,2,4) to the existing factory holes



---

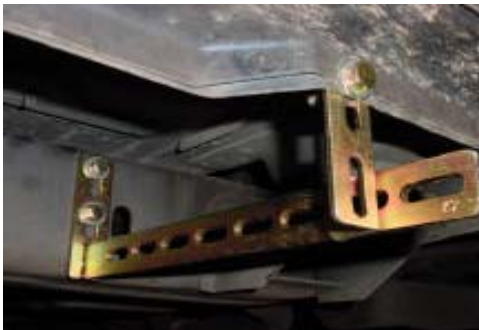
**USE BRACKET # 1,2,5 FOR:**

**Chevy/GMC**

04-08 Colorado/Canyon Regular Cab

**Dodge**

97-03 Dakota Regular Cab



Dome light wire on driver side pillar, Yellow (- trigger).

07-08 Nitro

99-08 Ram Standard Cab/SLT



Dome light wire is on driver side pillar, Brown (- trigger).



Ford  
00-07 Escape (curved chasis)  
01-03 Explorer Sport 2Dr (will not fit Sport Limited w/ flares)

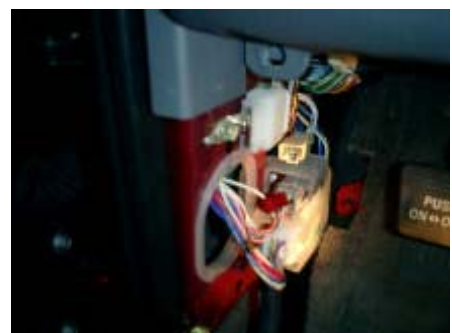
JEEP  
07-09 Wrangler 2D

Mazda  
00-05 Tribute

Mercury  
05-06 Mariner 4Dr (must remove underseal cover)

---

Toyota  
97-05 Rav 4  
95-09 Tacoma Standard Cab  
00-08 Tundra Standard Cab



White/Blue (-trigger) at driver side kick panel.